

Model# MO-1050

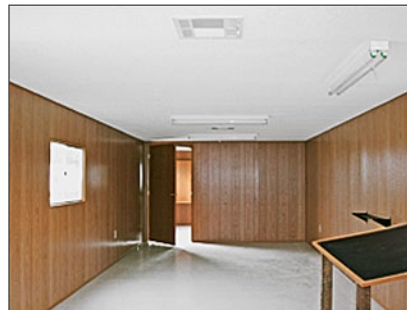
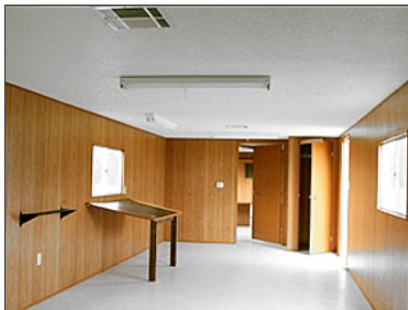
## Standard & Optional Features:

Standard furniture package includes 1 large plan table; 1 wall-mounted print rack; 2 full-width built-in desks, in each end office, with two-drawer file cabinet and knee wells for two work stations.

This rugged field office can be custom ordered to meet your specific job requirements. Popular options include custom interior configurations, exterior siding styles and trim colors, and plumbing such as half-baths, wash basins and showers.

*MO Series field offices are available in an 8, 10, 12, 14 and 24 feet with overall lengths ranging from 20 to 64 feet.*

## The Value Leader in High-Quality Mobile Workspace



## SPECIFICATIONS

### Frame:

- Outrigger frame, Non-detachable hitch, single axle, 12 ply tires

### Floor:

- R-7 unfaced insulation, 2x4 floor joists
- 5/8" plywood decking T&G
- 12"x12"x1/8" Vinyl Composition Tile

### Walls:

- 2x3 @ 16" O/C Exterior Studs, 7' high
- 12' front & rear offices, 22' main area
- R-7 unfaced insulation
- 5/32" pre-finished wood grain paneling
- .019" aluminum siding

### Roof/Ceiling:

- Tested Bow Truss @ 16" O/C, 30 psf LL
- R-11 unfaced insulation
- 1/2" pre-finished gypsum ceiling
- 30 gauge galvanized steel roofing

### Exterior Door:

- 36"x80" aluminum M/H type
- 14"x14" Lite/keyed knob set, stay chain

### Windows:

- 46" or 30"x27" Horizontal slider, Mill frame

### Electrical:

- 120/240 Volt, 1 phase panel
- #14 AWG Romex, flourescent strip ceiling lights

### Plumbing:

- Optional

### Heating & Air Conditioning:

- 2 ton cooling & 10kw heat wall-hung HVAC unit

### Specialities:

- Standard furniture package