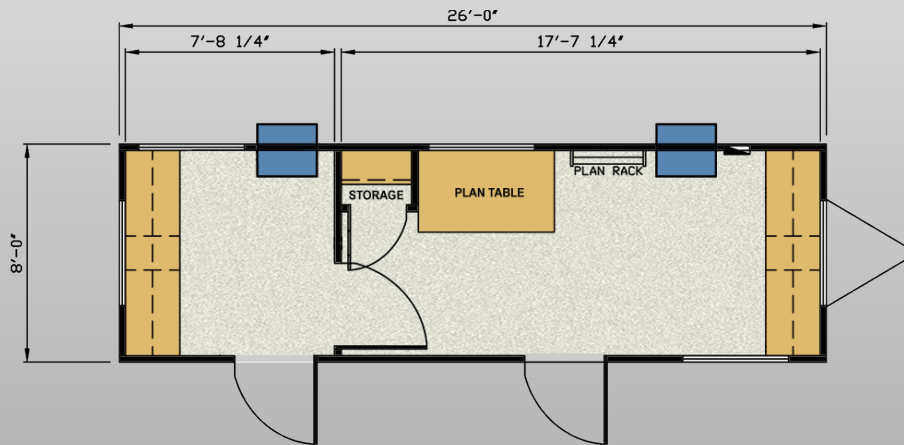


8'x30' MO

modulease
MOBILE AND MODULAR BUILDINGS



Model# MO-830

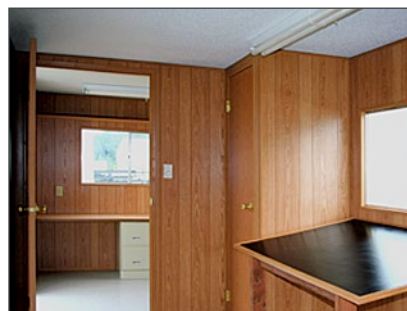
Standard & Optional Features:

Standard furniture package includes 1 large plan table; 1 wall-mounted print rack; 2 full-width built-in desks, in each end office, with two-drawer file cabinet and knee wells for two work stations.

This rugged field office can be custom ordered to meet your specific job requirements. Popular options include custom interior configurations, exterior siding styles and trim colors, and plumbing such as half-baths, wash basins and showers.

MO Series field offices are available in an 8, 10, 12, 14 and 24 feet with overall lengths ranging from 20 to 64 feet.

The Value Leader in High-Quality Mobile Workspace



SPECIFICATIONS

Frame:

- Outrigger frame, Non-detachable hitch, single axle, 12 ply tires

Floor:

- R-7 unfaced insulation, 2x4 floor joists
- 5/8" plywood decking T&G
- 12"x12"x1/8" Vinyl Composition Tile

Walls:

- 2x3 @ 16" O/C Exterior Studs, 7' high
- 8' rear office, 18' front (main) area
- R-7 unfaced insulation
- 5/32" pre-finished wood grain paneling
- .019" aluminum siding

Roof/Ceiling:

- Tapered 2x4 rafter @ 16" O/C, 30 psf LL
- R-11 unfaced insulation
- 1/2" pre-finished gypsum ceiling
- 30 gauge galvanized steel roofing

Exterior Door:

- 36"x80" aluminum M/H type
- 14"x14" Lite/keyed knob set, stay chain

Windows:

- 46" or 30"x27" Horizontal slider, Mill frame

Electrical:

- 120/240 Volt, 1 phase panel
- #14 AWG Romex, flourescent strip ceiling lights

Plumbing:

- Optional

Heating & Air Conditioning:

- Base board heat and thru-wall Air Conditioning

Specialities:

- Standard furniture package